

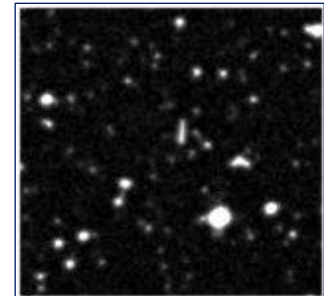
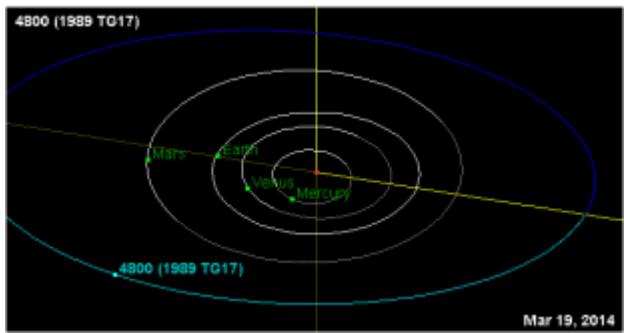
**orbital elements for (4800) Veveri**

Semi major axis	a	3.0061847 AU
Perihelion	q	2.6854949 AU
Eccentricity	e	0.1066767
Inclination	i	10.29885
Perhelion Angle	$\omega$	180.58093
Long.Asc.Node	$\Omega$	179.65148
Period		5.21 Year
Absolute Magnitude H		11.8
Diameter		10.0 km

Based on the decision of the **Committee on Small Body Nomenclature** of the **International Astronomical Union (IAU)**, this certificate testifies that the asteroid registered in the International Catalogue of Minor Planets under **No. 4800**, preliminary designation **1989 TG17**, has been assigned the name

# Veveri

Discovered 1989 Oct. 9 by H. Debehogne at the European Southern Observatory. Veveri is a suburb of the Italian town of Novara. It is a crossroad for a historical man-made irrigation system, one of the most important in northern Italy, comprised of the Cavour, Quinto Sella and Regina Elena channels, with the Roggia Mora connection, that supports rice cultivations covering an extended region. Name suggested by L. Rossetti and S. Foglia. (MPC 87546)



Siding Spring DSS2  
1988 Aug 13

*Sergio Foglia*